

EWS SOLAR-MOUNT TELEMETRY LOGGER



Overview

EWS' Solar-Mount Telemetry Logger leverages the power and reliability of our Switch Data logger family to deliver a cost-effective, compact and self-contained package which includes a neatly fitted 3-watt solar panel and external panel mount plugs to monitor groundwater and any other environmental applications. For ease of installation the Solar-Mount Telemetry Logger is pre-programmed for simple plug and play onsite.

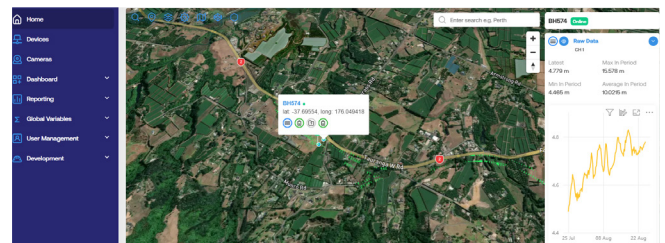
The Australian manufactured Solar-Mount Telemetry Logger is ideal for new and retro-fit monitoring projects where long-term unattended collection of readings from sensors is required.

Features

- Interchangeable comms options; Send data via Iridium or LTE
- Low power draw with internal battery backup
- 3-watt solar panel neatly fitted for long-term unattended monitoring
- Bluetooth embedded for local app connection and programming
- Remotely change settings with two-way communications including via Iridium
- Small compact form factor with everything included— approx. 200x250x20mm(lower portion) 80mm upper portion
- Lightweight
- Panel Mount Plugs for easy on-site sensor connection
- Automatic data upload directly to Orion web portal
- UV Protected housing

Benefits

- Works with SDI-12, Modbus, analogue and or VW output standard sensors
- No extra converter modules needed to read VW
- Locally manufactured in Australia
- Extremely compact and rugged compared to other options
- Locally supported
- Plug and play setup onsite
- Ideal for short or long-term, unattended deployments
- Easy to relocate
- Quick and easy to install
- Perfect for new and retrofit instrumentation projects
- Switch and software are supported worldwide and is proven in harsh remote environments



SPECIFICATIONS

Specifications subject to change without notice.

MEASUREMENT	
Measurement Interval	1 second to 24 hours
Number of Devices	10 devices supported
Number of Stored Measurements	2 years @ 1 hour logging
COMMUNICATIONS / INTERFACE	
Telemetry	
Number Available	Single channel either Iridium SBD or LTE Cat NB1
MODBUS	
Number Available	Single powered bus with up to 10 addressable devices
4-20mA Analogue	
Number Available	Up to 2 (shared with pulse on same port)
Range	0mA to 25mA
Sensitivity	7µA
Accuracy	0.50%
Pulse Input	
Number Available	Up to 2 (shared with 4/20mA on same port)
Pulse Width	5ms to 1 sec
Polarity	Active low
Relay driver output	
Voltage	+12V +/- 10%
Current	0.2A
Polarity	Active low
OTHER FEATURES	
Processor	32 bit Arm Cortex M4 processor
Clock	Internal real-time clock w/battery backup
Reed Switch	Swipe to activate
Connectivity	Blue Tooth / USB
ELECTRICAL	
Input Voltage	+12.5V to +24V
Battery	Rechargeable +7.4V, 1.8A/hr or non-rechargeable +9.2V, 1.4A/hr *Extender pack available
Current Consumption	0.1mA standby type (all sensors unpowered)
Iridium Transmission	0.7A @ +12 Volts
Power Connection	M8 connector
SDI-12 Port	M12 connector or 3 position terminal strip
Modbus	M12 connector or 2 position terminal strip
Red Warning LED	Indicates operation error
Green Heartbeat LED	Indicates unit operating properly
Blue Interface LED	Indicates interface communication
MECHANICAL	
Dimensions	200mm x 175mm x 20mm (bottom) 80mm (top)
Weight	900 grams
ENVIRONMENTAL	
IP Rating	IP67 ABS UV Protected
Temperature	-20°C to +60°C functionality
Humidity	0-95% Non-condensing